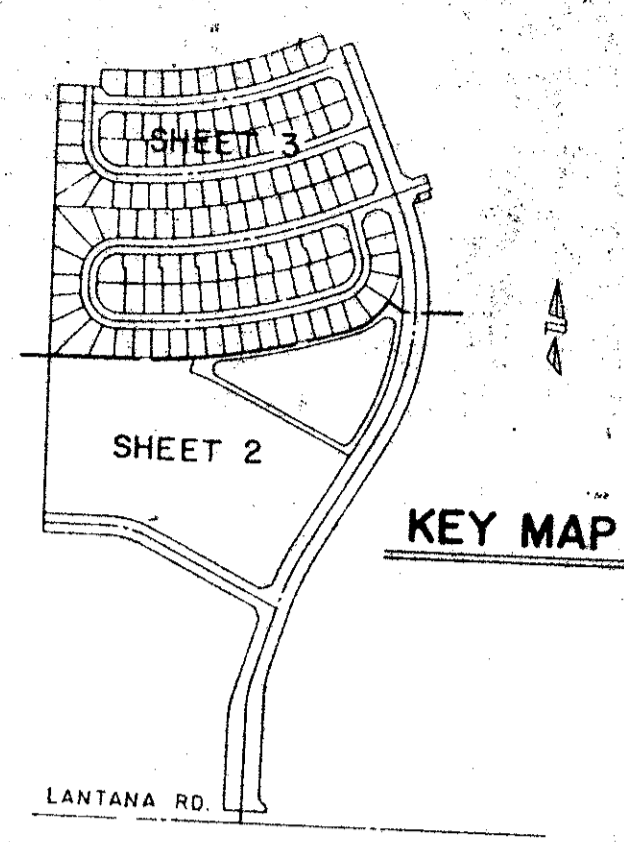


A PLANNED UNIT DEVELOPMENT
LANTANA HOMES PLAT 1
 PALM BEACH COUNTY, FLORIDA
 SHEET 3 OF 3 JANUARY, 1987

169



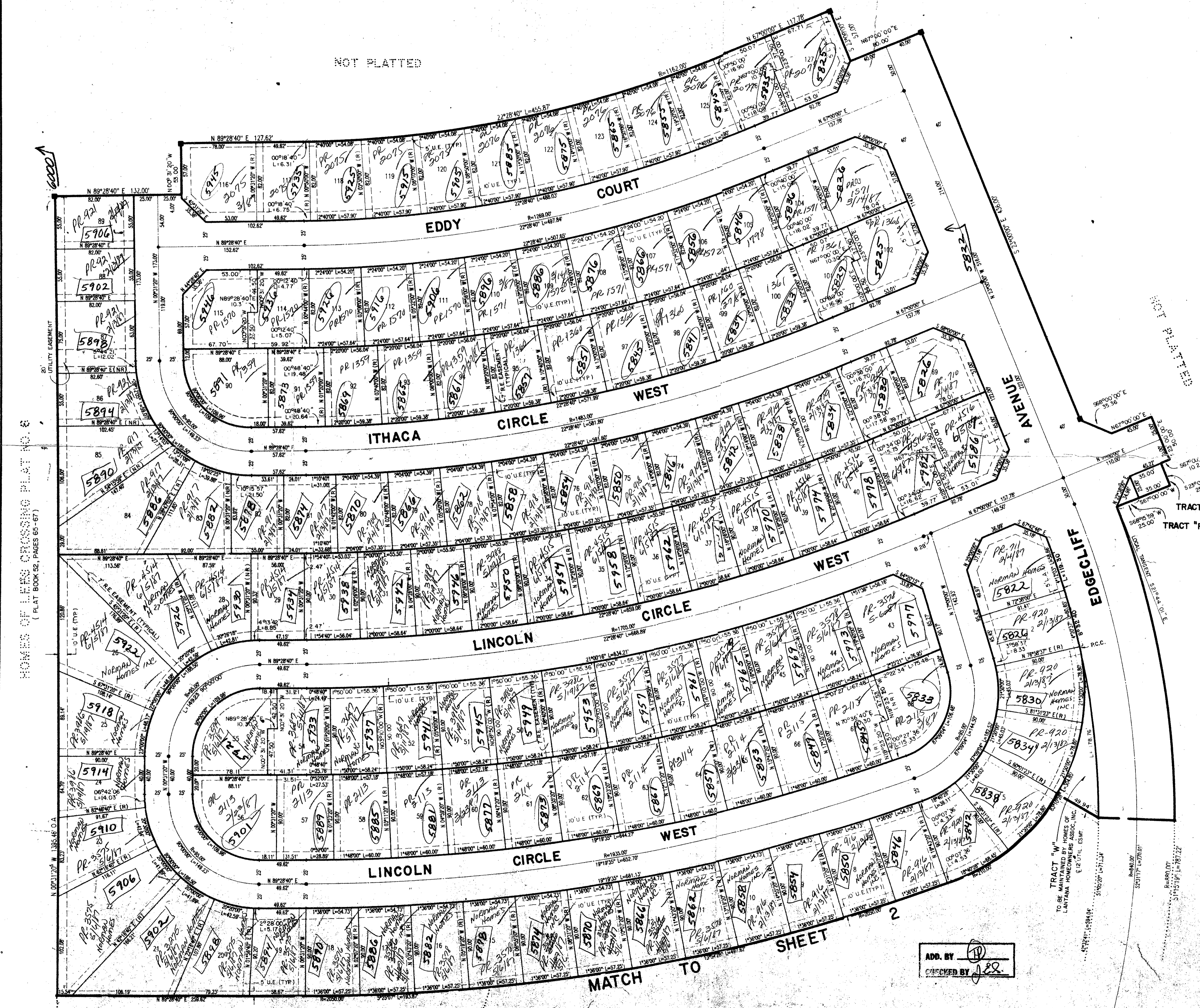
STATE OF FLORIDA
 COUNTY OF PALM BEACH
 This Plat was filed for record at
 M. this day of 19
 and duly recorded in Plat Book No.
 on Page
 John B. Dunkle, Clerk Circuit Court
 By _____ D.C.

DRAWING NUMBER
55/169

DRAWING NUMBER

DRAWING NUMBER

DRAWING NUMBER



SUBDIVISION *Lantana Homes*
 BOOK *65* PAGE *169*
 FLOOD ZONE *B* FLOOD MAP +
 QUAD # *33* ZONING
 SE ZIP CODE
 PUD NAME *OLP*

34-1704 33-167
35-175A 33-163

NOTE: ALL LOTS HAVE A 7' ROOF
 EAVES EASEMENT SHOWN THUS:

0421-001 *55/169*

MICHAEL B. SCHORAH & ASSOCIATES, INC
 ENGINEERS • PLANNERS • DEVELOPMENT CONSULTANTS
 TEL: (305) 968-0080
 1850 FOREST HILL BLVD., SUITE 205
 WEST PALM BEACH, FLORIDA 33406

ADD. BY *[Signature]*
 CHECKED BY *[Signature]*

MATCH TO SHEET 2